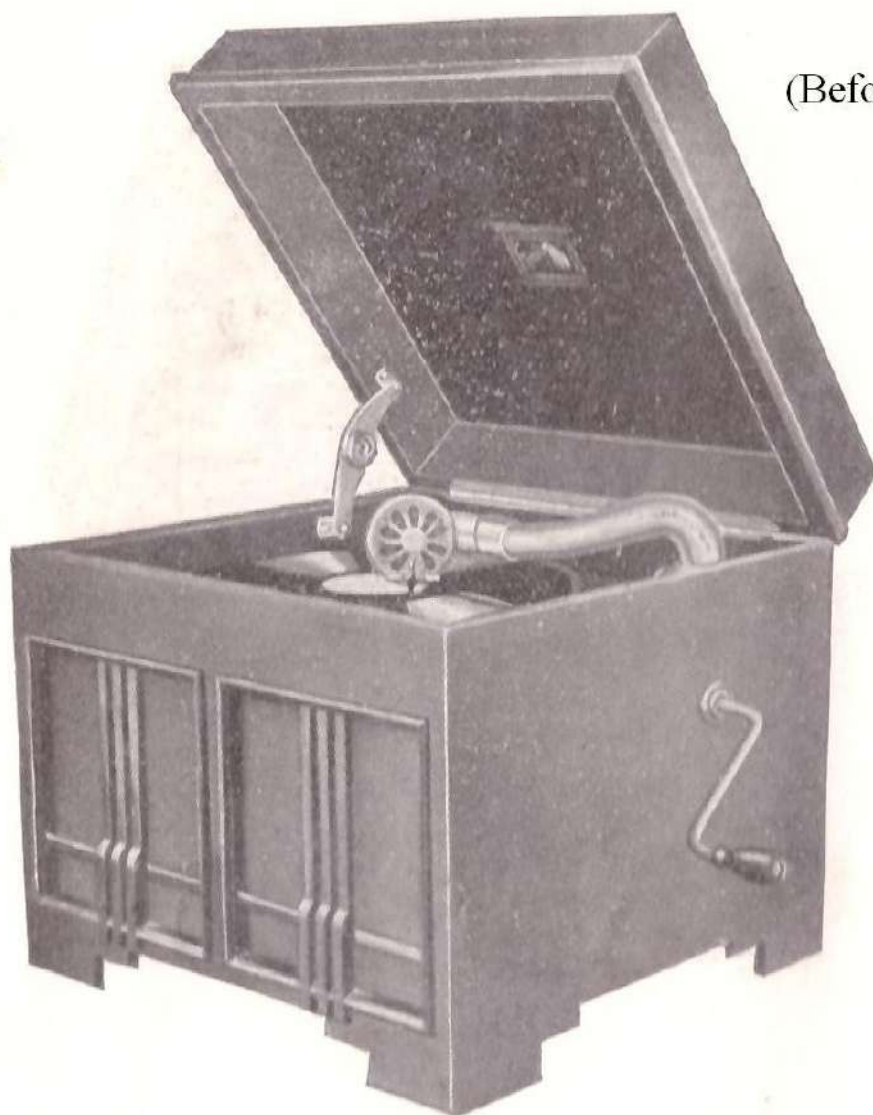


# MODEL No 173

## TABLE GRAND



(Before 1938)

*Height 15½ ins. Width 17 ins. Depth 16¼ ins.*

**Internal Fittings : Nickel-plated.**

Fitted with the latest "His Master's Voice" **EX-PONENTIAL** Tone Chamber, ball-bearing tone arm and **No. 5B Sound Box**. Needle bowls. Clips for "Tungstyle" needle tins. Double-spring motor, 12-inch turntable, **automatic brake**, speed regulator. Automatic Lid Stay. With Double Black Grill.

**Highly Polished Oak or Mahogany Finish Rs. 140-0**

**Cellulose Finish** (Blue, Green or Chocolate Brown) ... ..

**Rs. 145-0**

