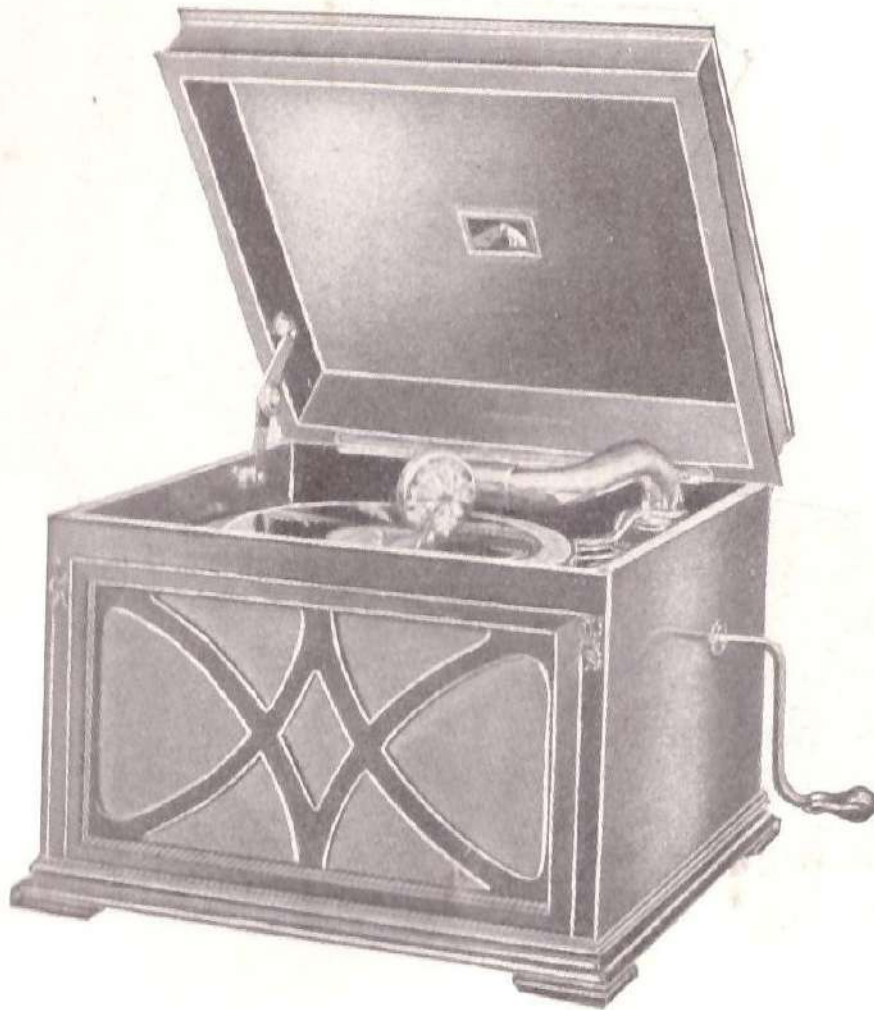


MODEL No 130

TABLE GRAND

(Before 1938)



Height 14 ins. Width 18 ins. Depth 17 ins.

Internal Fittings: Nickel-plated. External Fittings: Oxidized.

Fitted with the latest "His Master's Voice" **EXPONENTIAL Tone Chamber**, ball-bearing tone arm and **No. 5B Sound Box**. Needle bowls. Clips for "Tungstyle" needle tins. Double-spring motor, 12-inch turntable, automatic brake, speed regulator. Automatic Lid Stay.

Highly Polished Cabinet **Rs. 145-0**

Cellulose Finish (Blue, Green or Chocolate Brown) ... **Rs. 150-0**

